

LINDNER



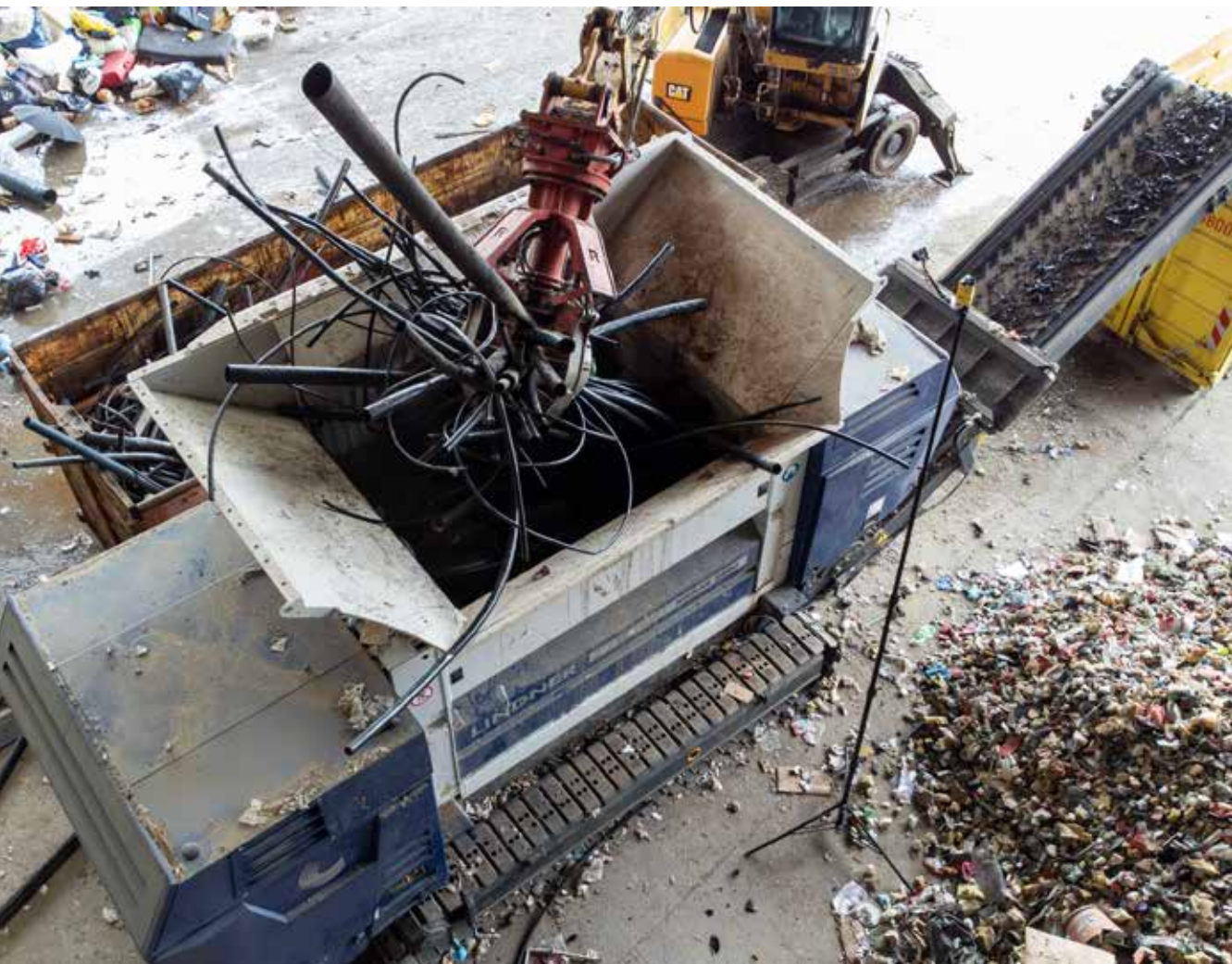
MERAK 2800

**ULTIMATELY
VERSATILE.**

MERAK: SHREDDING AT ITS BEST

UNIVERSAL GENIUS MEETS EFFICIENCY.

The Merak is the new star in the Lindner product family and sets new standards in terms of versatility, productivity and throughput. The innovative cutting system enables the shredder to be used universally, from coarse primary shredding to universal and secondary shredding, achieving output sizes ranging from 30 to 350 mm. The sophisticated drive concept with three transmission ratios (55, 87 and 103 rpm) enables the shredding of a wide range of materials at the optimum operating point, ensuring increased efficiency.



KEY FEATURES

- Mobile, powerful and compact single-shaft shredder with wet-running safety clutch
- 100% electric drive for maximum energy efficiency
- Three different cutting units for maximum flexibility
- Maximum material diversity for a variety of applications
- Homogeneous, defined output sizes from 30 to 350 mm
- High ease of maintenance and servicing

MATERIALS:



Bulky Waste



Industrial and commercial waste



MSW (household waste)



Plastic film



Plastic containers



Big Bags



Aluminium / PVC window profiles



Green waste



Tyres



Mattresses

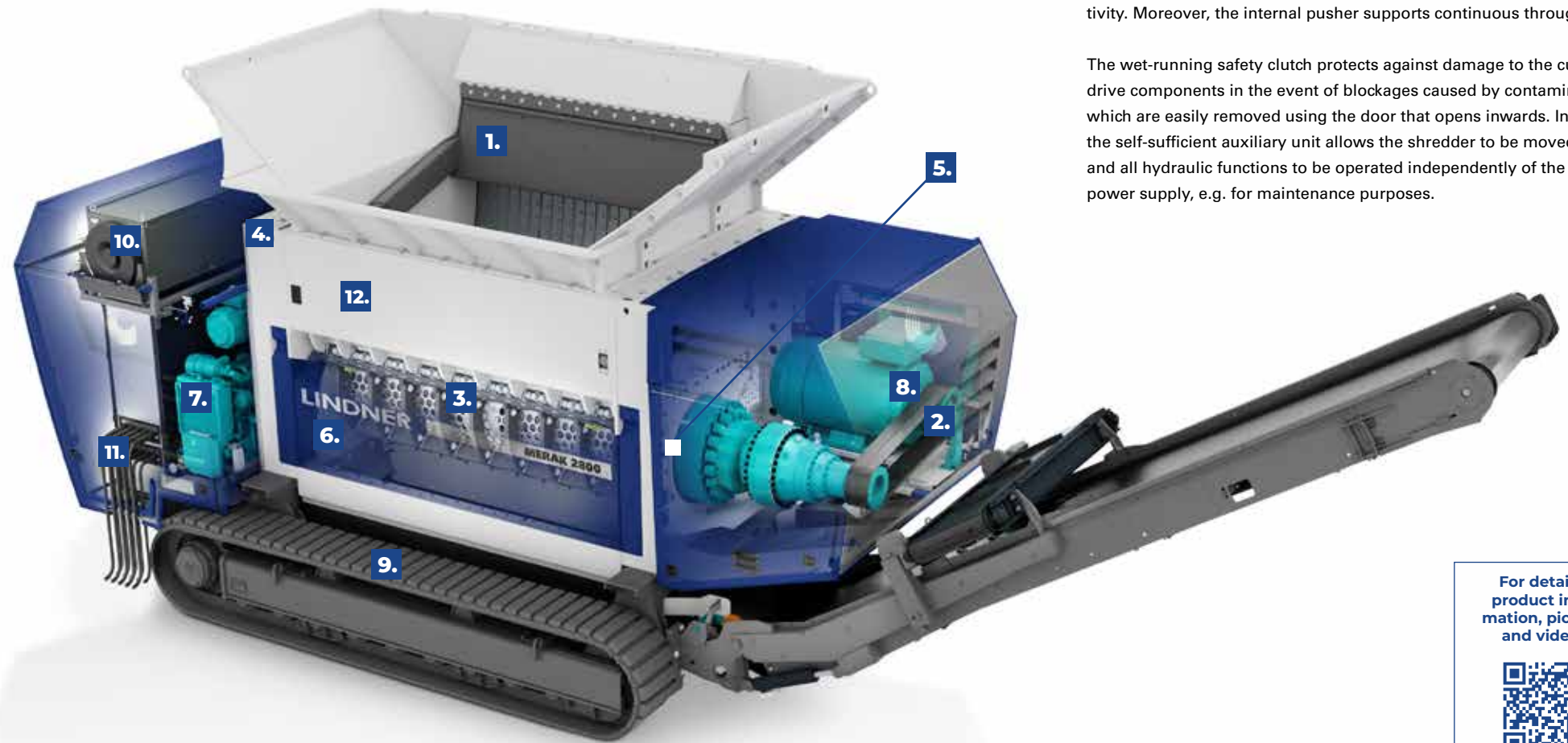


Waste wood and pallets



Rootstocks

- 1.** Internal pusher
- 2.** Powerful belt and gear drive combi
- 3.** Plug & go screen unit
- 4.** Chassis
- 5.** Wet-running safety clutch
- 6.** Maintenance door
- 7.** Motor (tracked chassis)
- 8.** Energy efficient electric motor
- 9.** Mobility
- 10.** Cooling
- 11.** Quick connectors for electrical supply
- 12.** Cutting unit
- 13.** Control



UNIVERSAL GENIUS SETS NEW STANDARDS

The powerful single-shaft shredder impresses with its robust design and added mobility. 100% electric, the innovative drive concept with three different cutting units and the ideal adjustment of the rotor speed to the specific material requirements ensures maximum efficiency and productivity. Moreover, the internal pusher supports continuous throughput.

The wet-running safety clutch protects against damage to the cutting and drive components in the event of blockages caused by contaminants, which are easily removed using the door that opens inwards. In addition, the self-sufficient auxiliary unit allows the shredder to be moved flexibly and all hydraulic functions to be operated independently of the electric power supply, e.g. for maintenance purposes.

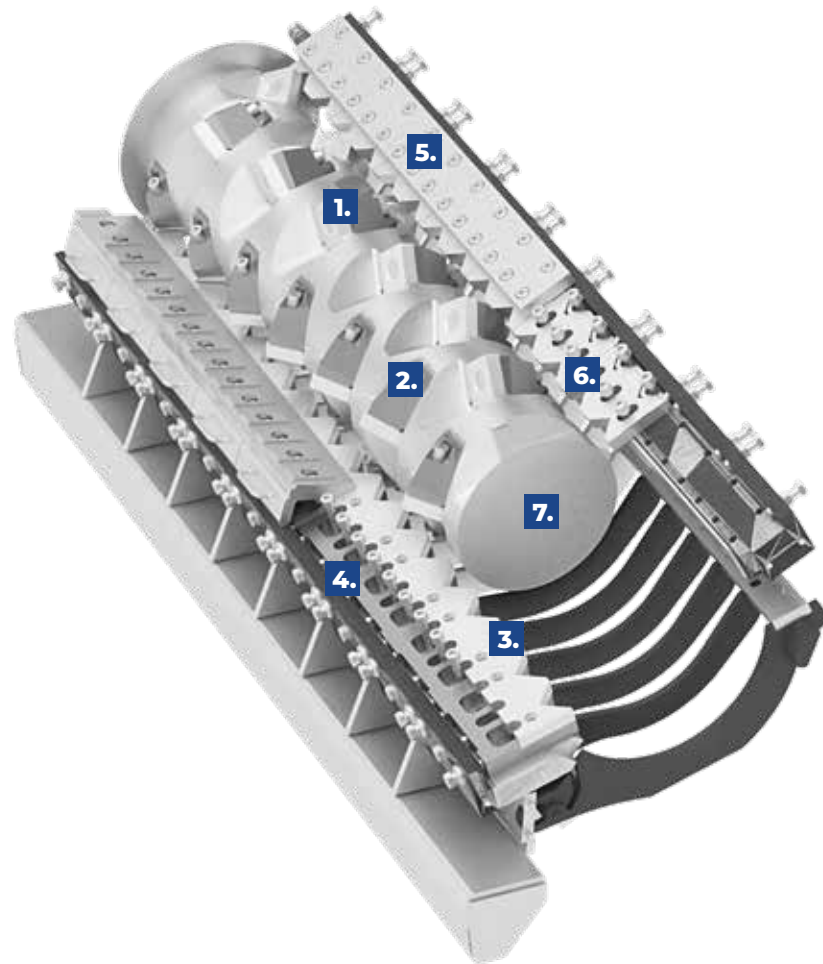
For detailed product information, pictures and videos:



MERAK PRIMARY SHREDDING

EFFICIENCY HIGH, VOLUME LOW.

The Merak primary shredding cutting system is specially designed for volume reduction and high throughputs and prepares materials optimally for downstream processes.



- 1. Rotor knives
- 2. Knife holders
- 3. Counter knives
- 4. Counter knife slider
- 5. Clamping bar
- 6. Scraper
- 7. Solid shaft

Particle size:



MATERIALS:

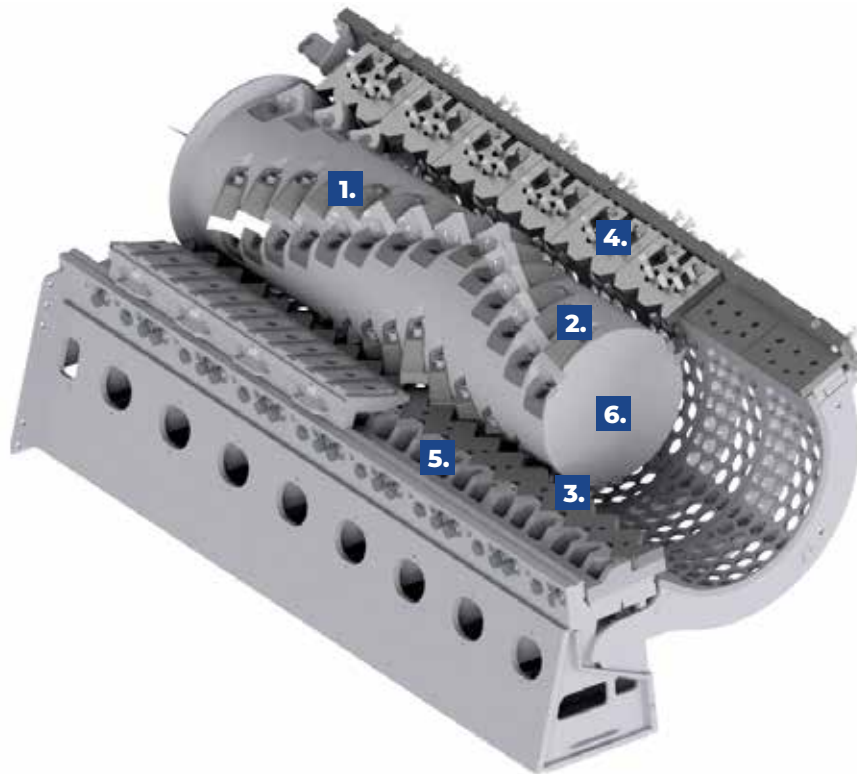
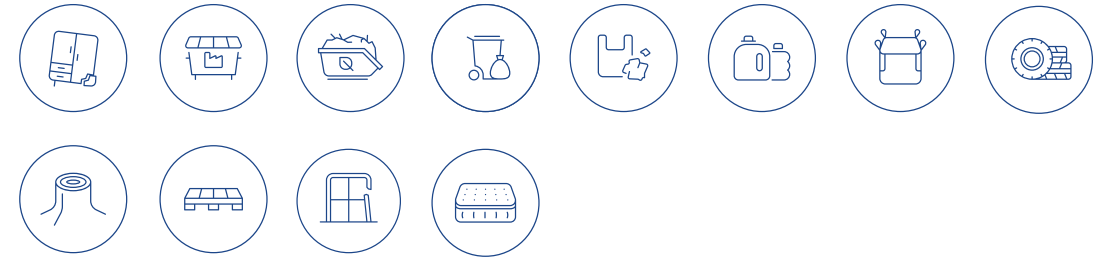


MERAK UNIVERSAL SHREDDING

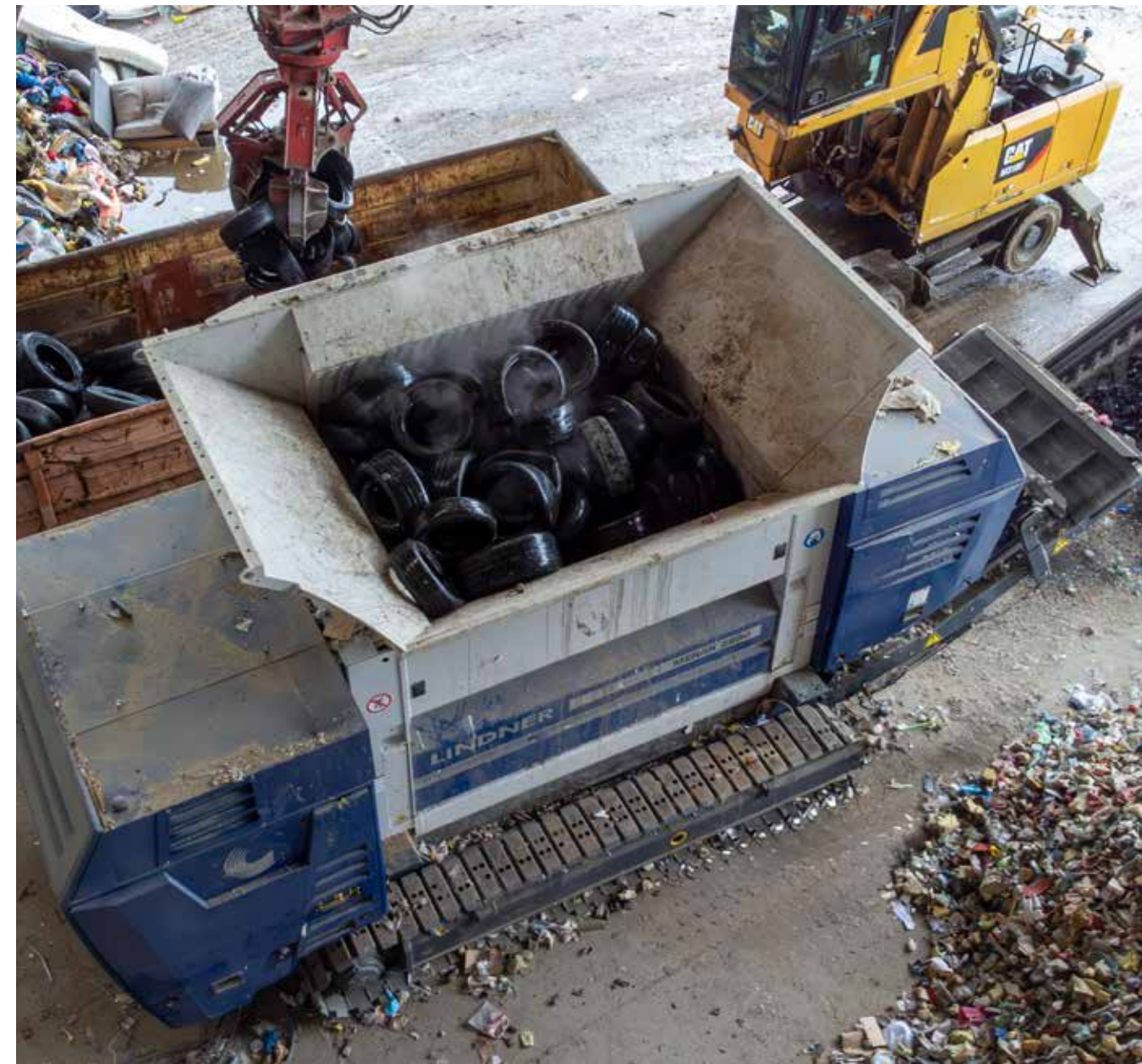
ALWAYS THE RIGHT CHOICE.

The Merak universal cutting system was developed for primary shredding as well as for one-step processing of a wide variety of material streams to a defined output size. The closely arranged rows of knives in combination with adjustable speeds ensure high throughput, efficiency and capacity to shred diverse materials and allow for different applications, in each case depending on the requirements and screen diameter. Both the knives and the knife holders are screwable, so that the individual components can be replaced quickly and easily if necessary.

MATERIALS:



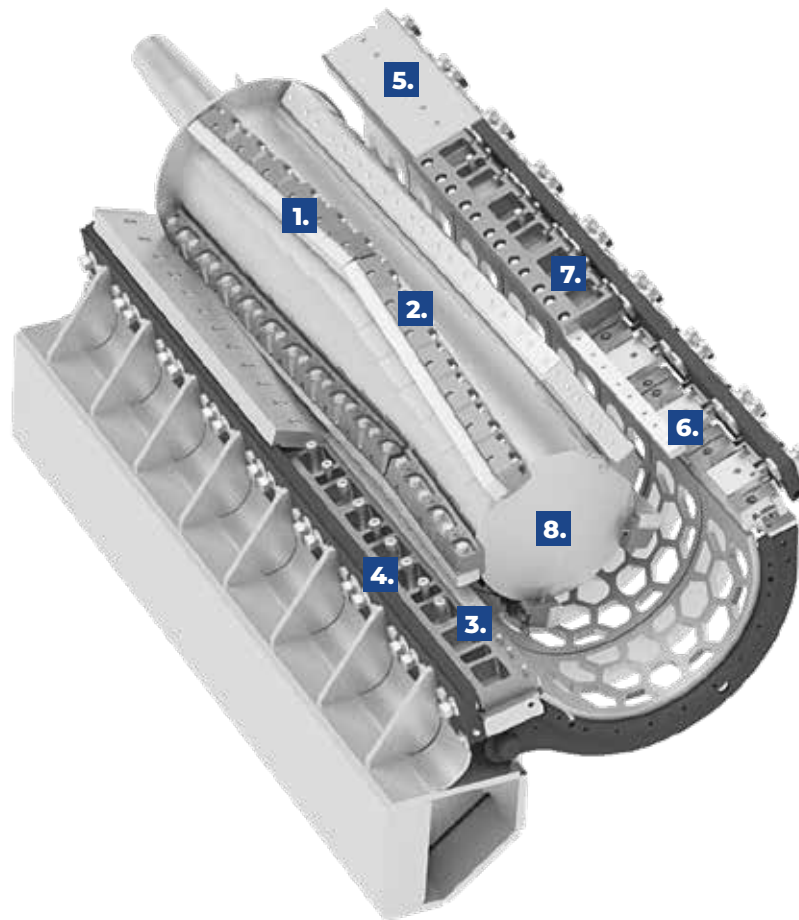
- 1. Rotor knives
- 2. Knife holders
- 3. Counter knives
- 4. Scraper
- 5. Counter knife slider
- 6. Solid shaft



MERAK SECONDARY SHREDDING

THE PERFECT FINISH.

The Merak secondary shredding cutting system is specially designed for small output sizes from 30 to 120 mm. Depending on the application and screen size, this cutting unit is ideal for the secondary shredding of waste wood or the processing of industrial and commercial waste into medium-calorific substitute fuel and to fuel calciners.



- 1. Rotor knives
- 2. Knife holders
- 3. Counter knives
- 4. Counter knife slider
- 5. Clamping bar
- 6. Scraper
- 7. Scraper slider
- 8. Solid shaft



MATERIALS: Pretreated materials of any kind



MERAK DRIVE UNIT

POWERFUL COMBINATION.



Thanks to its electric drive, the Merak drive system offers maximum energy efficiency. The proven combination of V-belt drive and ABB asynchronous motor also guarantees exceptional reliability. Whether primary, universal or secondary shredding - the Lindner modular system with its different drive and cutting units combines a wide range of applications with an unrivalled variety of materials - always at the optimum operating point. Equipped with a torque-controlled safety clutch, downtimes are minimised, protecting both the cutting unit and drive components. The optionally available automatic belt tensioning system (ATB) also makes sure that the power is optimally transmitted at all times.

■ FLEXIBLE APPLICATION

The innovative modular drive system enables the cutting unit and rotor speed to be perfectly adapted to the requirements of the specific input material, maximising efficiency and flexibility.

■ EFFICIENT ELECTRIC DRIVE

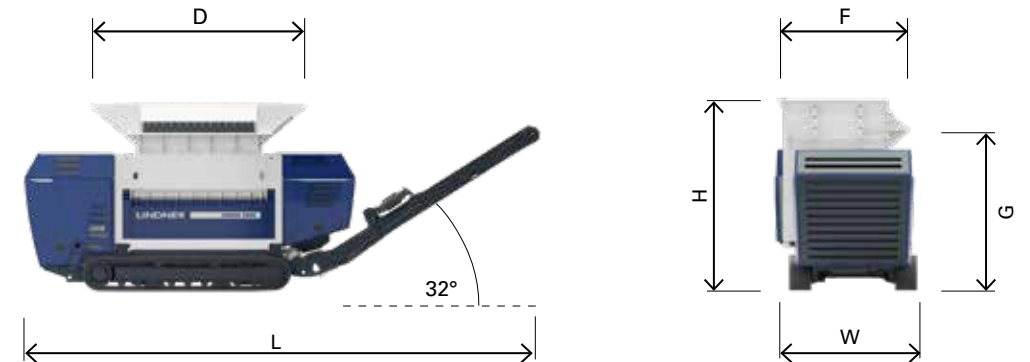
Maximum flexibility and versatility thanks to the 100 % electric drive system in combination with a self-sufficient 37 kW diesel unit.

■ MAXIMUM PRODUCTIVITY

The integrated, wet-running safety clutch protects against damage to the cutting and drive components in the event of blockages caused by non-shreddables, minimising downtime and maximising productivity.

■ POWER ELECTRONICS INCLUSIVE

Trouble-free operation even in difficult environments thanks to the integrated frequency converter cooling system and the vibration-insulated design.



MERAK 2800

DIMENSIONS*				
Measure (LxWxH)	mm	12211 x 3308 x 4421		
Hopper opening (DxF)	mm	4780 x 2850		
Feeding height (G)	mm	3745		
Hopper capacity	m ³	9,5		
Outlet width	mm	1300		
Total weight	kg	44000 (46300 with hopper and magnetic separator)		
CUTTING UNIT*				
Rotor length	mm	2800		
Rotor speed	min ⁻¹	55-103		
Cutting system	mm	145P	116PR	172RP5
Number of knives	pcs.	32	56	80
Hexagonal	pcs.	8	8	8
Round screen	pcs.	8	8	8
Polygonal	pcs.	8	8	8
Sickle-shaped	pcs.	8	8	8
DRIVE UNIT*				
Motor	kW	1 x 250		
Mobility		Tracked chassis + 37 kW independent power unit		
Frequency converter		✓		

*The stated values refer to standard machine versions with a standard hopper. The right to make technical changes is reserved.



CREATES VALUE.



Lindner NEXUS. **The service platform that connects.**

Real-time machine data, performance monitoring & maintenance.

With Nexus, the new Lindner service platform, you have an overview of all relevant machine data. Using the Nexus Gateway, real-time machine data is transferred to the digital platform and summarised in customisable reports. The platform also provides all documentation relevant to the system or the individual shredders, as well as updates. The Lindner service and support team can also be reached via Nexus. In urgent cases even 24/7.

Service à la Lindner:

- Lindner Nexus - digital service platform for customised performance monitoring
- Available 24/7 – worldwide
- Remote assistance – rapid support with remote maintenance
- High availability of spare parts thanks to extensive in-house production
- Original Lindner spare parts made in Austria for that extra level of quality

Maintenance – to keep everything running smoothly:

- Flexible maintenance offers for high machine availability
- Spare part packages for every application
- Qualified shaft reconditioning & hardfacing in line with the highest international standards

Lindner-Recyclingtech GmbH

Manuel-Lindner-Strasse 1 | 9800 Spittal/Drau | Austria
t.: +43 4762 2742 | f.: +43 4762 2742-9032 | office@lindner.com

www.lindner.com